

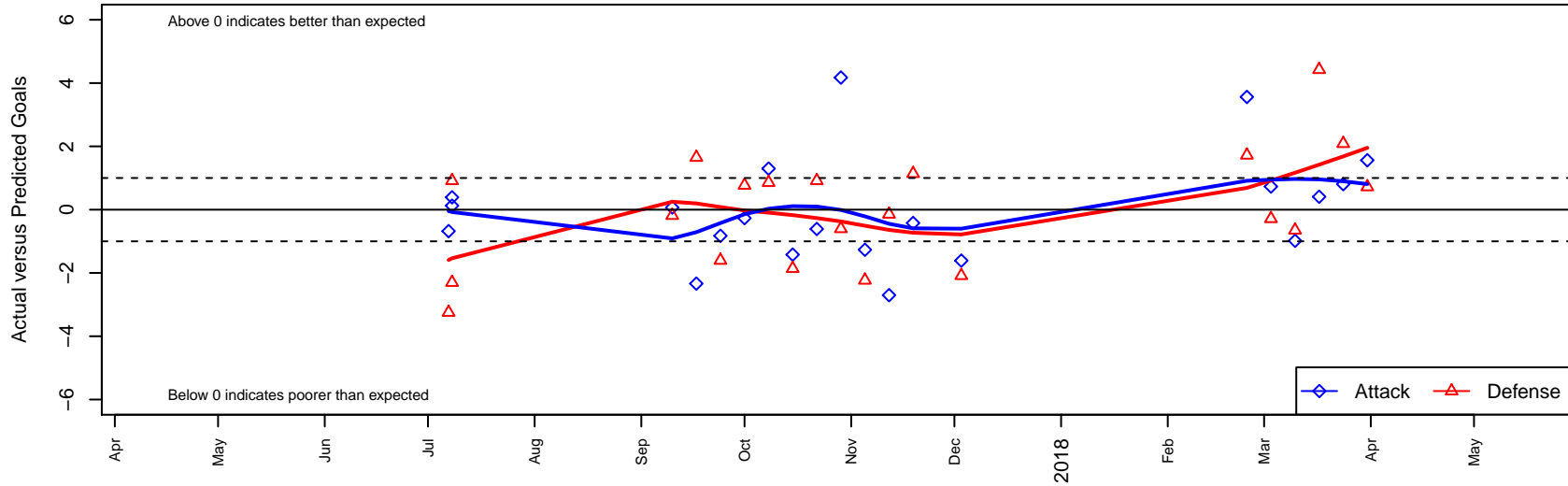
Seattle United Shoreline White B03

Seattle United Regional
 Shoreline, WA
 B03 total strength=1056
 attack=2.97 defense=1.99
 fall league = NPSL DIVISION 3 (03) U15
 spr league = Spr NPSL (03) Div 1 U15

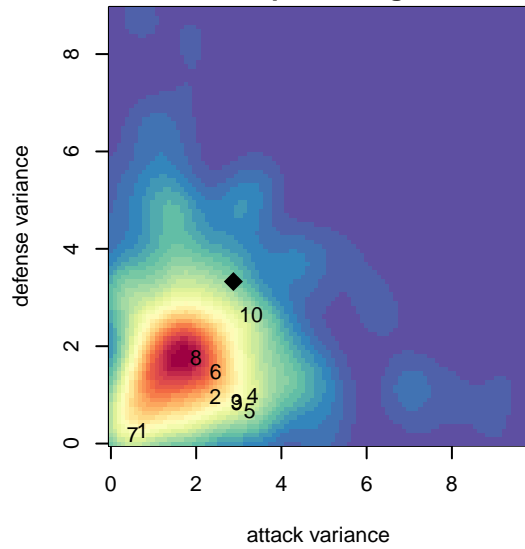
alt names used:
 Seattle United B03 Shoreline White
 Seattle United SH B03 White
 Seattle United SH B03 White

Venues played:
 2017 Seattle Cup BU15 Bronze
 2017 NPSL DIVISION 3 (03) U15
 2017 Spr NPSL (03) Division 1 U15

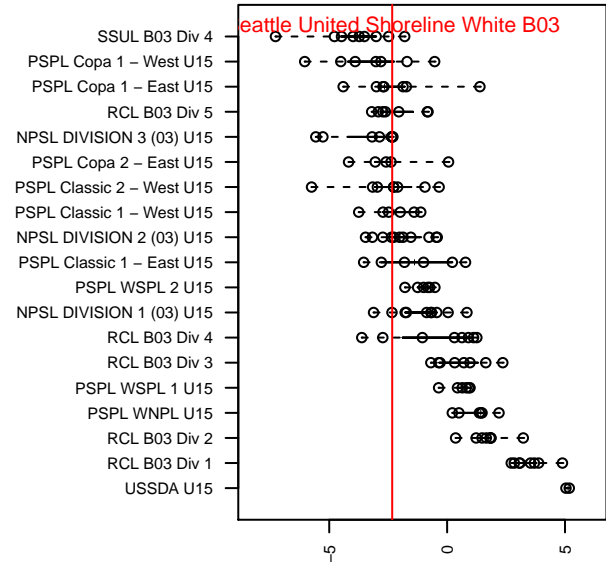
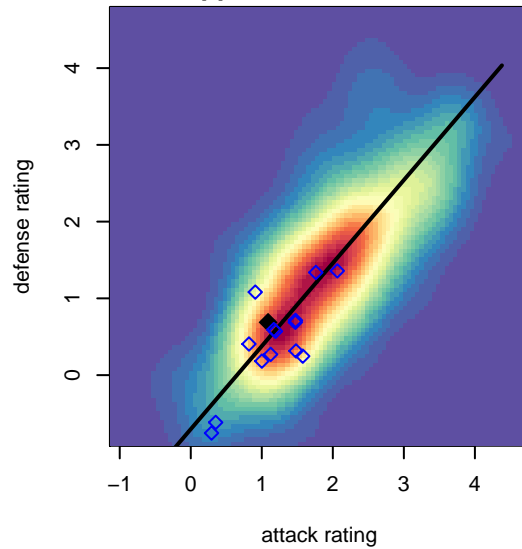
Seattle United Shoreline White B03
 Dots are actual minus expected GF (blue circles) and GA (red triangles).
 Blue line is smoothed change in attack strength. Red is smoothed change in defense strength.



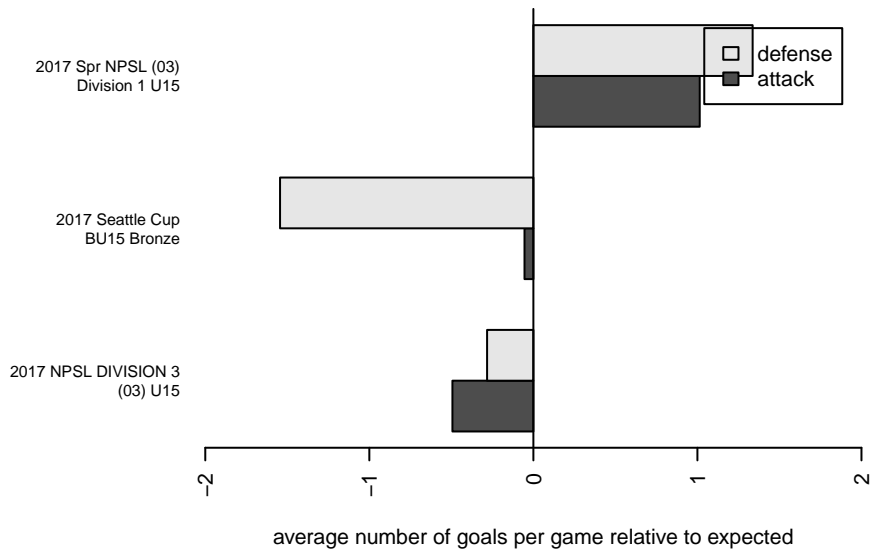
**attack and defense variance (black dot)
relative to other teams
and top 10 in region**



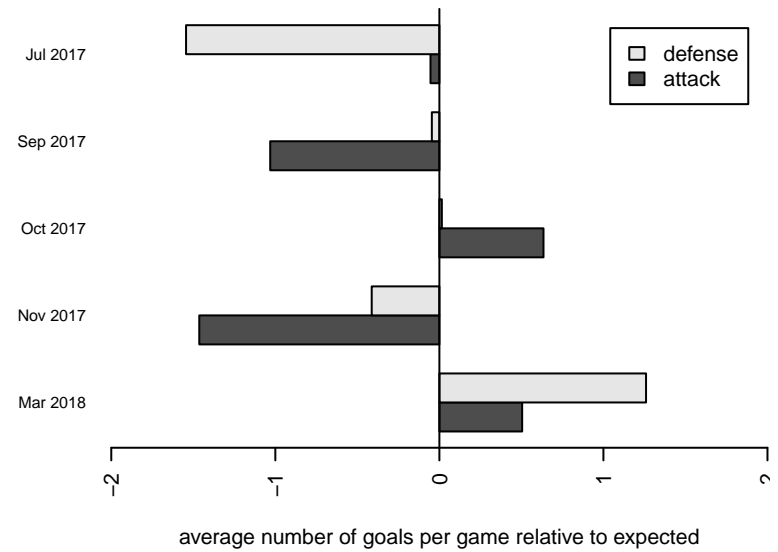
**attack and defense rating
relative to others at age
and all opponents in last 13 months**



Performance relative to 13 month average



Performance relative to 13 month average



date	home		away		venue	pred.home	pred.away
2018-03-31	Seattle United Shoreline White B03	3	Seattle United S Blue B03	1	2017 Spr NPSL (03) Division 1 U15	1.44	1.72
2018-03-24	Seattle United Shoreline White B03	2	Kent United White B03	1	2017 Spr NPSL (03) Division 1 U15	1.19	3.09
2018-03-17	NSC Green B03	1	Seattle United Shoreline White B03	1	2017 Spr NPSL (03) Division 1 U15	5.43	0.59
2018-03-10	Snohomish United Red B03	3	Seattle United Shoreline White B03	1	2017 Spr NPSL (03) Division 1 U15	2.35	1.98
2018-03-03	Seattle United Shoreline White B03	2	Whatcom Rangers Dev B03	3	2017 Spr NPSL (03) Division 1 U15	1.27	2.71
2018-02-24	Seattle United S Blue B03	0	Seattle United Shoreline White B03	5	2017 Spr NPSL (03) Division 1 U15	1.72	1.44
2017-12-03	Seattle United Shoreline White B03	0	FME Xtreme B03	4	2017 NPSL DIVISION 3 (03) U15	1.61	1.92
2017-11-19	Newport FC B03	1	Seattle United Shoreline White B03	1	2017 NPSL DIVISION 3 (03) U15	2.14	1.42
2017-11-12	Mukilteo Rush Nero B03	1	Seattle United Shoreline White B03	2	2017 NPSL DIVISION 3 (03) U15	0.86	4.70
2017-11-05	Seattle United Shoreline White B03	1	Seattle United W White B03	4	2017 NPSL DIVISION 3 (03) U15	2.27	1.77
2017-10-29	NSC Inferno B03	3	Seattle United Shoreline White B03	6	2017 NPSL DIVISION 3 (03) U15	2.40	1.83
2017-10-22	FME Xtreme B03	1	Seattle United Shoreline White B03	1	2017 NPSL DIVISION 3 (03) U15	1.92	1.61
2017-10-15	Seattle United Shoreline White B03	0	Newport FC B03	4	2017 NPSL DIVISION 3 (03) U15	1.42	2.14
2017-10-08	Seattle United Shoreline White B03	6	Mukilteo Rush Nero B03	0	2017 NPSL DIVISION 3 (03) U15	4.70	0.86
2017-10-01	Seattle United W White B03	1	Seattle United Shoreline White B03	2	2017 NPSL DIVISION 3 (03) U15	1.77	2.27
2017-09-24	Seattle United Shoreline White B03	1	NSC Inferno B03	4	2017 NPSL DIVISION 3 (03) U15	1.83	2.40
2017-09-17	Seattle United Shoreline White B03	0	South Whidbey Islanders B03	0	2017 NPSL DIVISION 3 (03) U15	2.34	1.65
2017-09-10	NWSC Deception FC B03	1	Seattle United Shoreline White B03	6	2017 NPSL DIVISION 3 (03) U15	0.82	5.93
2017-07-08	Mukilteo Rush B03	4	Seattle United Shoreline White B03	1	2017 Seattle Cup BU15 Bronze	1.70	0.87
2017-07-08	FME Xtreme B03	1	Seattle United Shoreline White B03	2	2017 Seattle Cup BU15 Bronze	1.92	1.61
2017-07-07	Seattle United Shoreline White B03	0	NSC Impact B03	7	2017 Seattle Cup BU15 Bronze	0.68	3.75